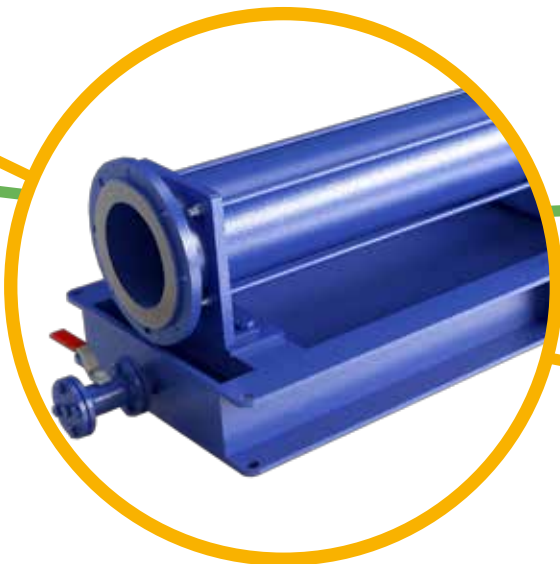
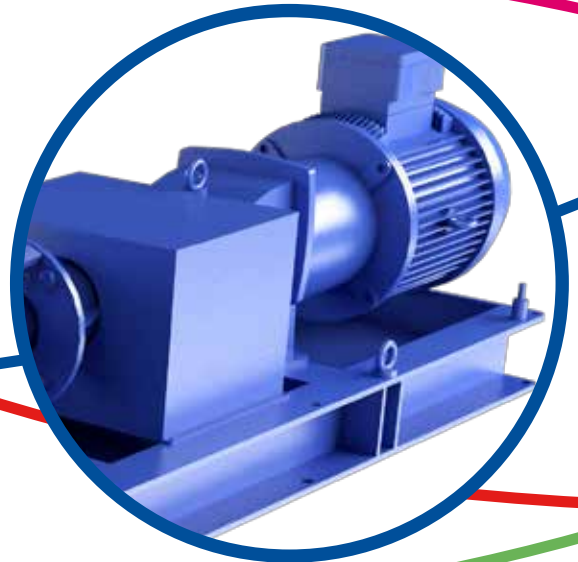
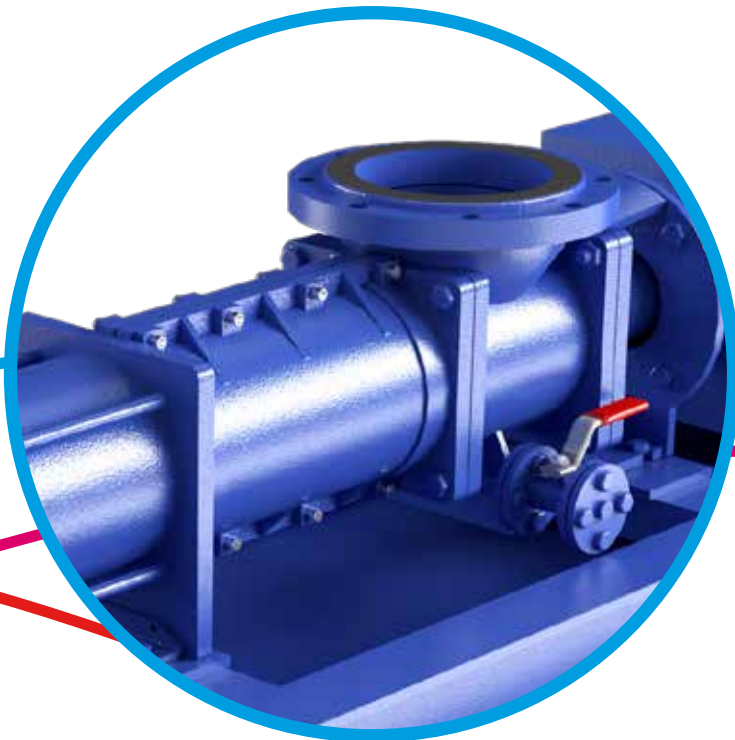


Mono™

EZstrip™

API 676 Pumps



 **Mono**

Oil & Gas Solutions





Mono is a recognised name in the design, manufacture and supply of progressing cavity pumps, parts, grinders, screens and packaged solutions, worldwide. We have 8 international sites and a global distribution network, as well as over 75 years' experience in providing a range of products for the multiple application requirements of today's industries.

Oil & Gas Solutions

Progressing Cavity (PC) pump technology is ideal for the arduous applications of solids entrained multiphase fluids, which require steady flow and low shear to prevent emulsification, whilst resisting the effects of abrasion without gas locking.

NOV Mono have the experience and state of the art facilities at plants around the world for the manufacture, design and development of any transfer pump application for process and separation duties.

Products

API 676 Pumps
Transfer Pumps
Widethroat Pumps
Dosing Pumps
Grinders
Artificial Lift

A variety of pump designs are available, including the new self-priming API 676 pump.

Featuring Mono's EZstrip™ technology, the pumps can be manufactured from different materials - ranging from cast iron and duplex steels through to traceable and NACE-certified stainless steels.

Capacity up to 400m³/h
60382 bbl (US)/d

Pressure up to 250 bar
3626 psi

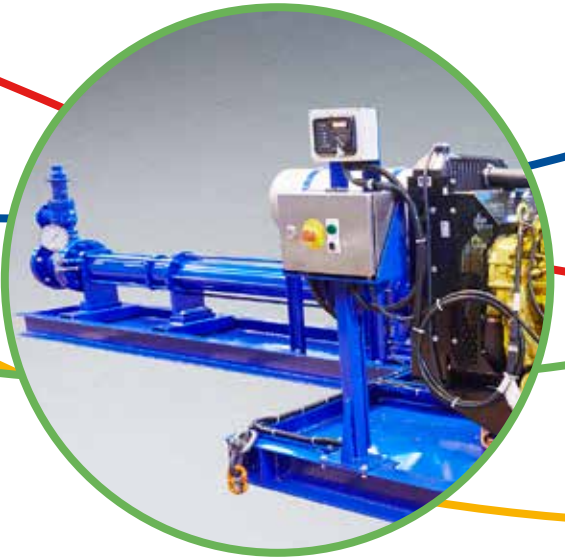
Temperature -10°C up to 100°C
14°F up to 212°F

National Oilwell Varco

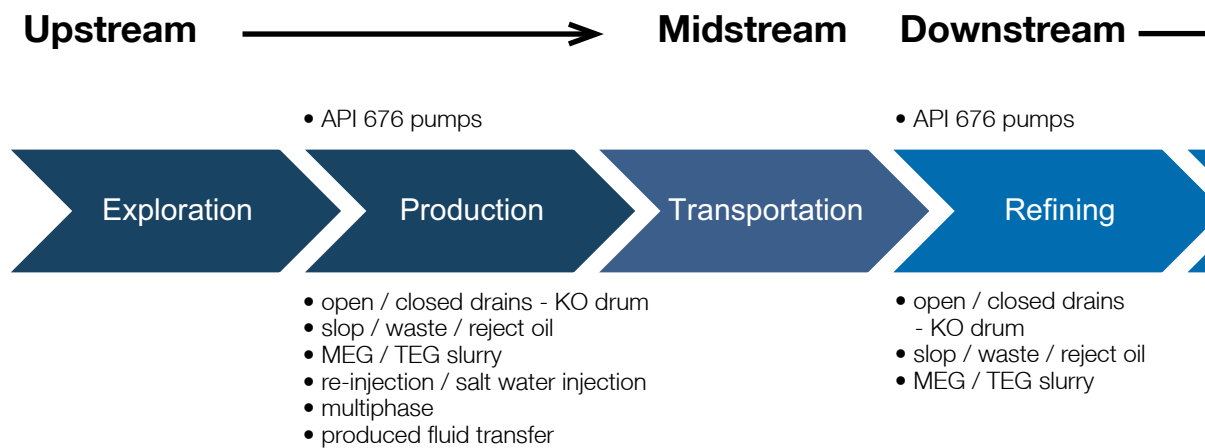
National Oilwell Varco Inc. is a worldwide leader in the design, manufacture and sale of equipment and components used in oil and gas drilling and production operations, the provision of oilfield services, and supply chain integration services to the upstream oil and gas industry.

National Oilwell Varco (NOV) is headquartered in Houston, Texas and has over 170 years' experience as a leading provider of products and services to the international oil and gas industry. It has over 100 subsidiaries, and currently has over 68,000 employees at 1,200 sites around the world, plus annual revenues in excess of \$22 billion.





Oil & Gas Value Chain



API 676

The American Petroleum Institute (API) is an association for the USA oil and gas industry and sets standards for a wide range of criteria, including materials of construction, operating procedures and safe practice.

Mono's API 676 EZstrip™ pump has been designed to comply with the Positive Displacement Pumps - Rotary, Third Edition standard and a specification is available, outlining the design and materials of construction requirements for pump selections.

Flows up to: 225m³/h / 990 g/min
33,942 barrels/day
Up to 24 bar / 350 psi

Over Pressure Protection

Pressure relief valves to API 520/526
 - supplied loose.

Dry Run Protection

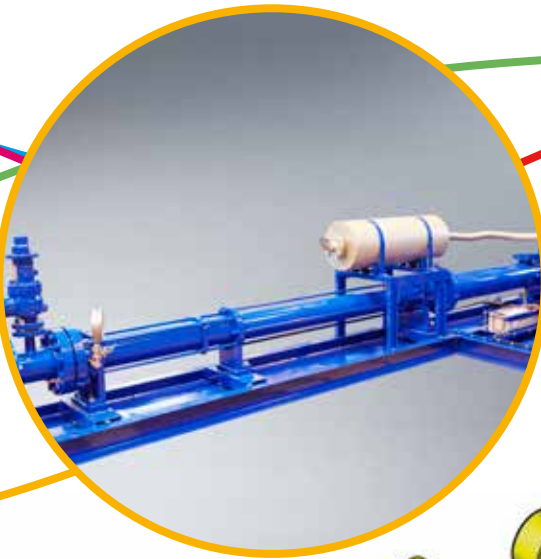
PT100 sensor with control relay, supplied with IS barrier for hazardous area applications.

Surface Protection

Mono standard high build two pack epoxy to 12944 C5-M or contract specific e.g. NORSOK M501.

Inspection and Test

Mechanical run, including performance, noise and vibration, NPSH and hydrostatic test and material certification to contract requirements.



Seal System

Seal Plan to suit application requirements.

Mechanical Seal

Single or double to API 682 Category 1

Pump

To API 676 Third Edition.
Materials of construction to suit application.

Baseplate

Long coupled, cold service mild steel extended base, c/w drip tray to API 676.

Motor

Safe or hazardous area.

Gearbox

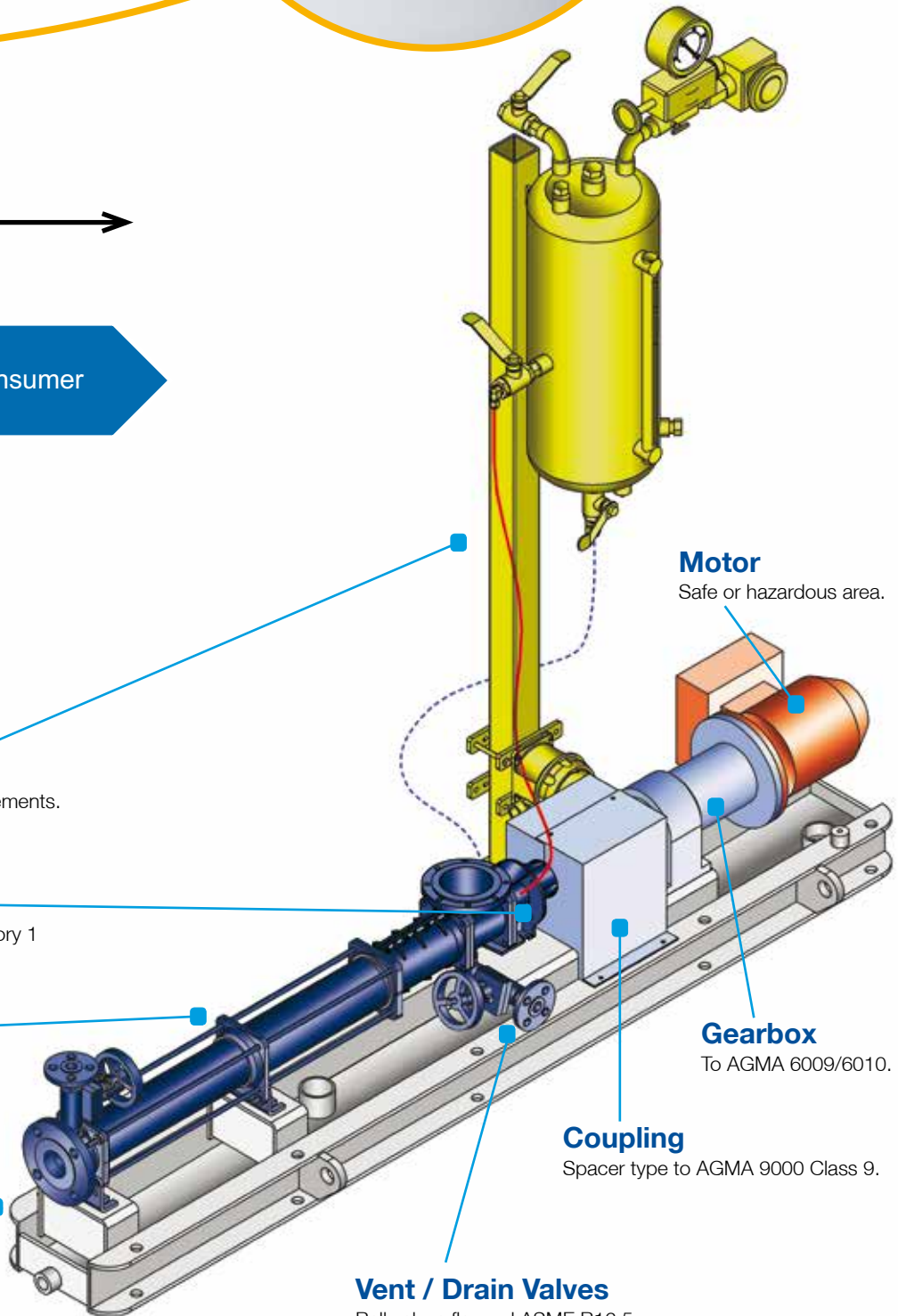
To AGMA 6009/6010.

Coupling

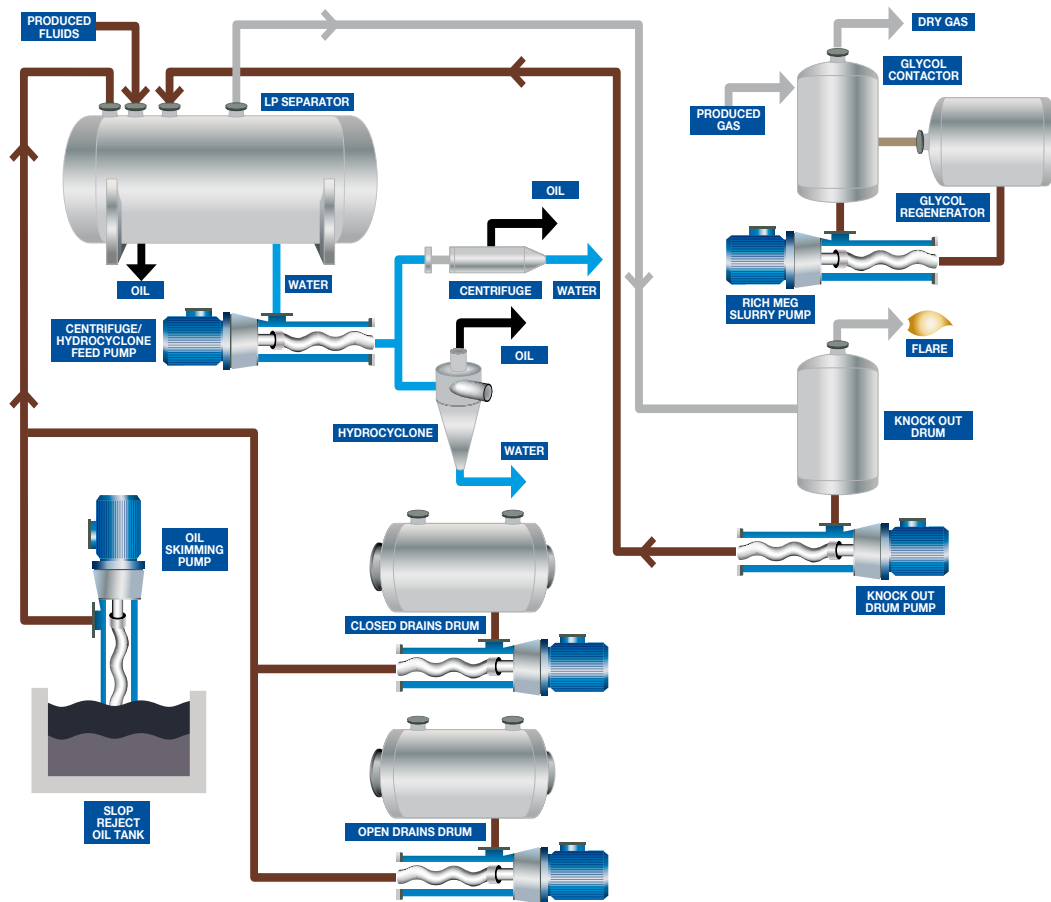
Spacer type to AGMA 9000 Class 9.

Vent / Drain Valves

Ball valves flanged ASME B16.5.



Oil & Gas Process



EZstrip™

Traditional progressing cavity (PC) pump maintenance requires full removal from the pipe work to replace the pump's rotor, stator and connecting rod assembly.

For large pumps, as much as 50% of the length of the pump needs to be left free to allow this.

Mono's API 676 pump features the EZstrip™ design, allowing the pump to be "Maintained-in-Place", reducing maintenance downtime and offering labour and space savings.

The suction chamber of the EZstrip API 676 pump is easily dismantled by removing a few screws to gain access to rotating parts.

Suction and discharge pipework can be left connected and for installations where space is at a premium, no dismantling space is needed.



Europe

Mono Pumps Ltd, Martin Street, Audenshaw
Manchester, M34 5JA, England
T. +44 (0)161 339 9000
E. info-mono@nov.com

NOV Mono, 2 Venture Road
University of Southampton Science Park
Chilworth, Southampton
Hampshire, SO16 7NP, England
T. +44 (0)23 8076 0000
E. Mono-oilandgas@nov.com

NOV Mono, 56, rue du Pont
88300 Rebeuville, France
T. +33 (0)3 29 94 26 88
E. monofrance@nov.com

Asia

Mono Pumps Ltd, Building 5, Madong Industrial Park
1250 Sicheng Road, Malu Town, Jiading District
Shanghai 201801, P.R. China
T. +86 (0)21 3990 4588
E. monoshanghai@nov.com

Australasia

Mono Pumps (Australia) Pty Ltd
75 Frankston Gardens Drive
Carrum Downs, Victoria 3201, Australia
T. 1800 333 138
E. ozsales@nov.com

Mono Pumps (New Zealand) Ltd
35-41 Fremlin Place, Avondale
Auckland 1026, New Zealand
T. +64 (0)9 829 0333
E. info@mono-pumps.co.nz

Africa

NOV, No. 10 Dipka Road
Kaymore Industrial Area
Stikland, Bellville 7530
Cape Town, South Africa
T. +27 (0)21 941 2900

Americas

Moyno, 8708 W. Little York Rd, Suite 100
Houston, Texas 77040, USA
T. +1 281 854 0300
E. moyno@nov.com

Moyno, 1895 W. Jefferson Street
Springfield, Ohio, 45506, USA
T. +1 877 486 6966
E. moyno@nov.com

www.mono-pumps.com



Published information other than that marked CERTIFIED does not extend any warranty or representation, expressed or implied, regarding these products. Any such warranties or other terms and conditions of sales and products shall be in accordance with Mono Pumps Limited standard terms and conditions of sale, available on request.

© 2014 Mono Pumps Limited. Literature reference: MPSB/021/01/R1

Mono™ is a registered trademark of Mono Pumps Ltd.
Registered in England No 300721



Oil & Gas Solutions