



English

Installation, Operation and Maintenance Instructions

X Range

Spares & Service Contact Details

Mono UK

Spares	+44 (0)161 214 2380 (direct line 8.15 am – 5.00 pm)
E-mail	spares@mono-pumps.com
Service	+44 (0)161 214 2390 (direct line 8.15 am – 5.00 pm)
E-mail	customerservices@mono-pumps.com
Service	+44 (0)161 339 9000 (24 hrs)

Mono Australia

	Telephone	Facsimile
Melbourne	(03) 9580 5211	(03) 9580 9036
Sydney	(02) 9521 5611	(02) 9542 3649
Brisbane	(07) 3350 4582	(07) 3350 3750
Adelaide	(08) 8447 8333	(08) 8447 8373
Perth	(08) 9479 0444	(08) 9479 0400
Darwin	(08) 8984 3099	(08) 8947 0540
Tasmania	(03) 6249 8704	(03) 6249 8756
E-mail	ozsales@mono-pumps.com	

Mono New Zealand

Spares & Service	+64 (0)9 829 0333
E-mail	info@mono-pumps.co.nz

Monoflo USA

Spares & Service	+1 713 466 7999
E-mail	inquire@monoflo.com

Monoflo South America

Spares & Service	+54 4296 8997	+54 4284 0323
E-mail	inquire@monoflo.com	

Mono China

	Telephone	Facsimile
Beijing	+86 (0) 10 6461 1115	+86 (0) 10 8486 8481
Shanghai	+86 (0) 21 5915 7168	+86 (0) 21 5915 6863
E-mail	info@mono-pumps.com	

Index

SECTION 1	INSTALLATION
	START-UP PROCEDURE
	ASSEMBLY AND DISMANTLING ADVICE
SECTION 2	FAULT FINDING
SECTION 3	DRAWING REFERENCE NUMBERS
	PUMP CODING
SECTION 4	DISMANTLING AND ASSEMBLY DIAGRAMS
	EXPLODED VIEWS
SECTION 5	TORQUE TIGHTENING FIGURES
	HELICAL FLIGHT CONVEYOR PIN JOINT LUBRICATION
	RECOMMENDED LUBRICATION AND SERVICE INTERNALS
SECTION 6	MONO PRODUCTS

EC Declaration as defined by Machinery Directive 98/37/EC.

EC Declaration of Incorporation

This declaration is only valid when the machinery has been supplied without drive unit.

In this case, the machinery meets the requirements of the said directive and is intended for incorporation into other machinery or for assembly with other machinery in order to constitute relevant machinery as defined by the said directive including any amendments, which are valid at the time of supply.

IMPORTANT

This machinery must not be put into service until the relevant machinery into which it is to be incorporated has been declared in conformity to the said directive.

This declaration is only valid when the machinery has been installed, operated and maintained in accordance with these instructions and safety guidelines contained within as well as instructions supplied for equipment assembled with or intended for use with this equipment.

The following harmonised standards are applicable:

BS EN 809

BS EN ISO 12100 Parts 1 & 2

EC Declaration of Conformity

This declaration is only valid when the machinery has been supplied with drive unit.

In this case the machinery meets the requirements of the said directive including any amendments which are valid at the time of supply.

IMPORTANT

This declaration is only valid when the machinery has been installed, operated and maintained in accordance with these instructions and safety guidelines contained within as well as instructions supplied for equipment assembled with or intended for use with this equipment.



Mr G.D. Thomas, Chief Engineer

Installation, Operation & Maintenance Instructions

INSTALLATION

1.1 INSTALLATION AND SAFETY RECOMMENDATIONS

In common with other items of process plant a pump must be installed correctly to ensure satisfactory and safe operation. The pump must also be maintained to a suitable standard. Following these recommendations will ensure that the safety of personnel and satisfactory operation of the pump is achieved.

1.2.1. GENERAL

When handling harmful or objectionable materials, adequate ventilation must be provided in order to disperse dangerous concentrations of vapours. It is recommended that wherever possible, Mono pumps should be installed with provision for adequate lighting, thus ensuring that effective maintenance can be carried out in satisfactory conditions. With certain product materials, a hosing down facility with adequate draining will simplify maintenance and prolong the life of pump components.

1.2.2. SYSTEM DESIGN & INSTALLATION

At the system design stage, consideration must be given to provision of filler plugs, and the installation of non-return and/or isolating valves. The pumps must also be protected by suitable devices against over pressure and dry running.

i. HORIZONTAL MOUNTING

All ranges excluding P Range Mono pumps are normally installed in a horizontal position with baseplates mounted on a flat surface, grouted in and bolted, thus ensuring firm fixing and a reduction in noise and vibration.

The unit should be checked after bolting down to ensure that the alignment of the pump to its prime mover is correct.

ii. VERTICAL MOUNTING

P Range Pumps Only

The P range pumps are intended for vertical installation. Care must be taken when lifting the pump into the vertical position.

Normally 'P' range pumps will be designed with a sole plate that will be bolted to the customers framework.

If the pump is to be mounted in any way other than described above, confirmation of the installation must be agreed with Mono Pumps Limited. All the pipework should be independently supported.

1.3.1 HANDLING



During installation and maintenance, attention must be paid to the safe handling of all items. Where a pump or its components weigh in excess of 20 kg (45lb) it is recommended that suitable lifting tackle should be used to ensure that personal injury or damage to components does not occur.

For safe handling of both bareshaft pumps and pump units (pump/ gearbox/motor etc.) slings should be used. The position of the slings will depend upon the specific pump/unit construction and should be carried out by personnel with the relevant experience to ensure that the pump is not damaged and injury to personnel does not occur.

If eyebolts do exist then these should only be used for lifting the individual components for which they are supplied.

1.3.2 STORAGE

SHORT TERM STORAGE

Where a pump has to be stored for 6 months or less then the following steps are advised:-

1. Store pump inside wherever possible or if this is not feasible then provide protective covering. Do not allow moisture to collect around the pump.
2. Remove the drain plug, if fitted. Any inspection plates fitted should also be removed to ensure that the suction housing can drain and dry completely.
3. Loosen the packed gland and inject sufficient grease into the stuffing box. Tighten the gland nut hand tight. If a water flush system is to be used do not grease, a small amount of light oil is recommended for these.
4. See Manufacturers Instructions for motor/gearbox/drive instructions for storage procedures.

Installation, Operation & Maintenance Instructions

LONG TERM STORAGE

If the pump is to be kept in storage for more than six months then in addition to the above the following procedures should be carried out regularly (every 2 - 3 weeks if possible):

1. If practicable rotate the pump at least three quarters of one revolution to avoid the rotor setting in the stator.
2. Note, however, that the pump is not to be rotated for more than two revolutions each time because damage could be caused to the rotor/ stator elements.

IMMEDIATELY PRIOR TO INSTALLATION AND STARTING

Before installing the pump please ensure that all plugs and inspection plates are replaced and that excess grease/oil is removed from the stuffing box.



1.4

ELECTRICAL

Electrical connection should only be made using equipment suitable for both rating and environment. Where any doubts exist regarding the suitability of equipment, Mono Pumps Limited, should be consulted before proceeding. Normally the Mono pump should be installed with starting equipment arranged to give direct on line starting.



Earthing points will be provided on electric drives (if supplied) and it is essential that these are correctly connected. When the motor is being wired and checked for rotation, the start/stop sequence must be instantaneous to prevent dry running (see 2) or pressurising upstream equipment. (Check direction arrow on pump nameplate). The electrical installation should include appropriate isolating equipment to ensure that the pump unit is safe to work on.

1.5 PRESSURE RELIEF VALVES AND NON-RETURN VALVES

1. It is recommended that a suitable safety device is installed on the discharge side of the pump to prevent over-pressurisation of the system.
2. It is also recommended that a non-return valve is installed on the discharge side of the pump to prevent reverse flow through the system.

When both are installed it is advised that the relief valve is positioned closer to the pump than the non-return valve.

IMPORTANT



The pump must never run against a closed inlet or outlet valve, as this could result in mechanical failure.

1.6

GENERAL SAFETY



GREAT CARE MUST BE TAKEN TO PROTECT ALL ELECTRICAL EQUIPMENT FROM SPLASHING WHEN HOSING DOWN. WHERE MONO PUMPS LIMITED HAVE SUPPLIED A BARESHAFT PUMP THE ONUS IS ON THE USER TO FIT ADEQUATE GUARDS IN COMPLIANCE WITH THE REQUIREMENTS OF THE RELEVANT REGULATIONS.

All nuts and bolts, securing flanges and base mounting fixtures must be checked for tightness before operation. To eliminate vibration, the pump must be correctly aligned with the drive unit, and all guards must be securely fixed in position. When commissioning the plant, all joints in the system must be checked thoroughly for leakage.

If, when starting, the pump does not appear to operate correctly (see 2), the plant must be shut down immediately and the cause of the malfunction established before operations are recommenced. It is recommended that depending upon plant system operation, either a combined vacuum and pressure gauge, or a vacuum gauge only be fitted to the pump inlet port, and a pressure gauge fitted to the outlet port, these will then continuously monitor the pump operating conditions.

1.7

DUTY CONDITIONS

Pumps should only be installed on duties for which Mono Pumps Limited have specified the materials of construction, flow rates, pressure, temperature, speed etc. Where dangerous materials are to be pumped, consideration must be given to the safe discharge from relief valves, gland drains etc.

Installation, Operation & Maintenance Instructions

IF THE DUTY SHOULD BE CHANGED, MONO PUMPS LIMITED SHOULD BE CONTACTED AND THEIR RECOMMENDATIONS SOUGHT IN THE INTEREST OF APPLICATION, SAFETY OF PLANT, EFFICIENCY AND PUMP LIFE.

DIRECTIONS OF ROTATION



BEFORE THE DIRECTION OF ROTATION IS CHANGED, MONO PUMPS LIMITED MUST BE CONSULTED SO THAT THE SUITABILITY OF THE PUMP CAN BE CONFIRMED WHEN OPERATING ON THE NEW DUTY.

2.3.1. GLAND PACKING

Where a pump is supplied fitted with gland packing (manufactured from a non-asbestos material), the gland will require adjustment during the initial running in period. Under normal working conditions a slight drip from the gland under pressure does not harm and assists in lubricating the packing. A gland drip is, however, undesirable when handling corrosive, degreasing, or abrasive materials. Under these conditions the gland must be tightened the minimum amount whilst the pump is running to ensure satisfactory sealing when under pressure, or to stop entry of air when under suction conditions.

Provision of a gland drain should be considered, especially for the leakage of hazardous products.



CARE IS REQUIRED WHEN ADJUSTING THE GLAND WHILST PUMP IS RUNNING.

2.3.2 MECHANICAL SEALS - ALL PUMPS

When a mechanical seal is fitted to the pump it may be necessary to provide a barrier fluid to some part of the seal. This should be provided in line with the seal manufacturers instructions.

2.4. GUARDS



In the interests of safety, and in accordance with the U.K. Health and Safety at Work Act 1974, all guards must be replaced after necessary adjustments have been made to the pump.

2.5 WARNING/CONTROL DEVICE

Prior to operating the pump, if any warning or control devices are fitted these must be set in accordance with their specific instructions.

2. START-UP PROCEDURE

Pumps must be filled with liquid before starting. The initial filling is not for priming purposes, but to provide the necessary lubrication of the stator until the pump primes itself. When the pump is stopped, sufficient liquid will normally be trapped in the rotor/stator assembly to provide lubrication upon re-starting.

If, however, the pump has been left standing for an appreciable time, moved to a new location, or has been dismantled and re-assembled, it must be refilled with liquid and given a few turns before starting. The pump is normally somewhat stiff to turn by hand owing to the close rotor/stator fit. However, this stiffness disappears when the pump is running normally against pressure.

2.1 DRY RUNNING



NEVER RUN THE PUMP IN A DRY CONDITION EVEN FOR A FEW REVOLUTIONS OR THE STATOR WILL BE DAMAGED IMMEDIATELY. CONTINUAL DRY RUNNING COULD PRODUCE SOME HARMFUL OR DAMAGING EFFECTS.

2.2 ROTATION PUMP ROTATION DETAILS

<u>PUMP RANGE</u>	<u>BI-DIRECTIONAL</u>	<u>COMMENT</u>
E	Yes	_____
Monobloc B	Yes	_____
Merlin Industrial	Yes	_____
S, SL	Yes	_____
LF	Yes	_____
W	No	**
Merlin Widethroat	No	**
MM ML	No	*
MS	No	**
G	No	*
CB/SB	No	*
Placer	No	**
Grout Injection	No	**
P	No	*
CP0011	No	**
CP0025,CP0800,CP1600	No	*

* Clockwise when viewed from drive end.

** Anti-clockwise when viewed from drive end.

Installation, Operation & Maintenance Instructions

2.6 PUMP OPERATING TEMPERATURE

The range of temperatures the pump surfaces will develop is dependent upon factors such as product temperature and ambient temperature of the installation. There may be instances where the external pump surface can exceed 50°C.

In these instances, personnel must be made aware of this and suitable warnings/guarding used.

2.7 NOISE LEVELS

1. The noise sound pressure level will not exceed 85dB at one metre distance from the pump.
2. This is based on a typical installation and does not necessarily include noise from other sources or any contribution from building reverberation.
3. For pumps identified below, the noise levels vary between 85 and 95dB but will not exceed 95dB at one metre distance from the pump.

Pump Sizes (based on E Range Pumping Element)

Single Stage	Size 12 and above
Two Stage	Size 9 and above
Four Stage	Size 7 and above
Six Stage	Size 7 and above
Eight Stage	Size 6 and above

2.8 LUBRICATION

Pumps fitted with bearings should be inspected periodically to see if grease replenishment is necessary, and if so, grease should be added until the chambers at the ends of the bearing spacer are approximately one third full.

Periodic bearing inspection is necessary to maintain optimum bearing performance. The most expedient time to inspect is during periods of regular scheduled equipment downtime - for routine maintenance or for any other reason.

Under tropical or other arduous conditions, however, a more frequent examination may be necessary. It is therefore advisable to establish a correct maintenance schedule or periodic inspection.

BP LC2 / Mobilgrease XHP 222 or their equivalent must be used for replenishment.

2.9 PUMP UNITS

Where a pump unit is dismantled and re-assembled, consideration must be given to ensure that where appropriate the following steps are covered.

1. Correct alignment of pump/gearbox
2. Use of appropriate couplings & bushes
3. Use of appropriate belts & pulleys correctly tensioned.

2.10 CLEANING PRIOR TO OPERATION

i. Non Food Use

During the commissioning of a new pump or recommissioning of an overhauled pump, it is advisable to clean the pump prior to the initial operation of the pump in the process.

ii. Food Use

When a pump has been supplied for a food application, it is important to ensure that the pump is clean prior to initial operation of the pump.

Therefore, it is important that a clean-in-place treatment is executed on the pump at the following times:-

1. When the pump is first commissioned for use.
2. When any spare components are fitted into the wetted area of the pump.

A recommended CIP procedure is as follows:

This procedure should not be used on the CP Pump Range. Please consult our application engineers for a suitable procedure.

Installation, Operation & Maintenance Instructions

Caustic Wash

LQ94 ex Lever Diversey or equivalent
2% concentration

Acid Wash

P3 Horolith 617 ex Henkel
Ecolab or equivalent 1% concentration

Procedure

1. Caustic wash @ 75°C for 20 mins
2. Water rinse @ 80°C for 20 mins
3. Acid wash @ 50°C for 20 mins
4. Water rinse @ 80°C for 20 mins

- CIP flow rates (hence pump speeds) should be maximised to achieve highest level of cleanability.

Pumps fitted with CIP by pass ports will permit higher flow rates without the need to increase pump speed.

- The use of 'neat active' caustic and acid chemicals is not recommended. Proprietary cleaning agents should be used in line with manufacturers instructions.
- All seals and gaskets should be replaced with new if disturbed during maintenance.
- Pump internals should be regularly inspected to ensure hygienic integrity is maintained, especially with respect to elastomeric components and seals, and replaced if necessary.

The four stages constitute one cycle and we recommend that this cycle is used to clean the pump before use on food.

Once the pump has been commissioned, the cleaning process will depend upon the application. The user must therefore ensure that their cleaning procedures are suitable for the duty for which the pump has been purchased.

2.11 WIDETHROAT PUMPS

Specific pumps may have auger feed screws, with or without a bridge breaker system to feed the pumping element. If the pump installation requires that these cannot be enclosed, care must be taken to ensure personnel cannot gain access whilst the pump is operating. If this is not possible an emergency stop device must be fitted nearby.

2.12 EXPLOSIVE PRODUCTS / HAZARDOUS ATMOSPHERES

In certain instances the product being pumped may well be of a hazardous nature.

In these installations consideration must be given to provide suitable protection and appropriate warnings to safeguard personnel and plant.

2.13 ACCESS PORTS



Where access ports are fitted then the following steps must be followed prior to removal:

1. Pump must be shut down and the electrical supply isolated.
2. Protective clothing should be worn, especially if the pumped product is obnoxious.
3. Remove access plate with care utilising where possible drip trays to collect product leakage.

Access ports are included to assist in removing blockages and to allow a visual check on the components within the suction chamber.

It is not to be considered as an additional method in dismantling the pump.

Re-assembly of the plate should be completed using new gaskets prior to the pump being switched on.

2.14 ADJUSTABLE STATORS

If adjustable stators are fitted then the following steps must be followed for adjusting the clamping devices.

Installation, Operation & Maintenance Instructions

The adjustable stator assembly is designed to give an even compression around the stator circumference. It is designed to be used when pump performance reduces through wear to an unacceptable level, to restore the required flow rate.

The stator compression is increased using the following steps:-

1. Release the six locking screws half a turn.
2. Tighten the eight clamp screws until adjustment allowed by releasing the lock screws has been taken up.
3. Repeat steps 1 and 2 until the pump performance has been restored to its former level.

NOTE

It is imperative that when adjusting the stator that only sufficient pressure is placed on the stator to enable the capacity of the pump to be reinstated.

Over tightening of the stator could easily result in damage to the driver by overload and so extreme care must be taken when carrying out these adjustments. It is therefore advisable to make the adjustment while the pump is running and power readings can be monitored.

REMOVAL OF ADJUSTABLE STATOR

The procedure for removal of an adjustable stator is the same as that of a standard one, except it is necessary to remove the clamp plates before the stator can be twisted off the rotor.

This can be done by undoing the clamp screws; then releasing the clamp plate by using the locking screws as jacking screws to remove the clamp plates.

Re-assembly will be done using the reverse procedure.

2.15 MAINTENANCE OF WEARING COMPONENTS

2.15.1 ROTOR AND STATOR

The wear rate on these components is dependent on many factors, such as product abrasivity, speed, pressure etc.

When pump performance has reduced to an unacceptable level one or possibly both items will need replacing.

2.15.2 DRIVE SHAFT - PACKED GLAND

The wear rate of the gland area is dependent on many factors such as product abrasivity and speed. Regular gland maintenance will maximise the life of the shaft. Replacement of both the gland packing and shaft will be necessary when shaft sealing becomes difficult to achieve.

2.15.3 COUPLING ROD JOINTS

Regular maintenance and lubrication will maximise life of the joints.

Replacement of one or both joint assemblies and possibly the coupling rod may be necessary when wear is apparent.

It is essential to replace all the joint items with genuine Mono parts to ensure maximum life.

2.15.4 FLEXISHAFT DRIVE PUMPS

With this design there are no wearing items to replace in the drive train, however, if during routine inspection the shaft is visibly damaged / distorted or the protective coating is damaged, then this item should be replaced to avoid unexpected breakdowns.

3.0 ASSEMBLY AND DISMANTLING

Section 4 contains the steps to dismantle and re-assemble the pump. All fastenings must be tightened securely and when identified the appropriate torque figures should be used.

3.1 USE OF ITEMS NOT APPROVED OR MANUFACTURED BY MONO PUMPS LIMITED

The pump and its components have been designed to ensure that the pump will operate safely within the guidelines covered by the legislation.

As a consequence Mono Pumps Limited have declared the machine safe to use for the duty specified as defined by the Declaration of Incorporation or Conformity that is issued with this Instruction Manual.

Installation, Operation & Maintenance Instructions

The use of replacement items that are not approved by or manufactured by Mono Pumps Limited may affect the safe operation of the pump and it may therefore become a safety hazard to both operators and other equipment. In these instances the Declaration provided will therefore become invalid. The guarantee referenced in the Terms and Conditions of Sale will also be invalidated if replacement items are used that are not approved or manufactured by Mono Pumps Limited.

Diagnostic Chart

SYMPTOMS		POSSIBLE CAUSES	
1. NO DISCHARGE		1. 2. 3. 7. 26. 28. 29.	
2. LOSS OF CAPACITY		3. 4. 5. 6. 7. 8. 9. 10. 22. 13. 16. 17. 21. 22. 23. 29	
3. IRREGULAR DISCHARGE		3. 4. 5. 6. 7. 8. 13. 15. 29.	
4. PRIMING LOST AFTER START		3. 4. 5. 6. 7. 8. 13. 15	
5. PUMP STALLS AT START UP		8. 11. 24.	
6. PUMP OVERHEATS		8. 9. 11. 12. 18. 20	
7. MOTOR OVERHEATS		8. 11. 12. 15. 18. 20.	
8. EXCESSIVE POWER ABSORBED BY PUMP		8. 11. 12. 15. 18. 20	
9. NOISE AND VIBRATION		3. 4. 5. 6. 7. 8. 9. 11. 13. 15. 18. 19. 20. 22. 23. 27. 31	
10. PUMP ELEMENT WEAR		9. 11.	
11. EXCESSIVE GLAND OR SEAL WEAR		12. 14. 25. 30.	
12. GLAND LEAKAGE		13. 14.	
13. SEIZURE		9. 11. 12. 20.	
LIST OF CAUSES		REMEDIAL ACTIONS	
1. INCORRECT DIRECTION OF ROTATION		1. REVERSE MOTOR	
2. PUMP UNPRIMED		2. BLEED SYSTEM OF AIR/GAS	
3. INSUFFICIENT N.P.S.H. AVAILABLE		3. INCREASE SUCTION HEAD OR REDUCE SPEED/TEMP.	
4. PRODUCT VAPORISING IN SUPPLY LINE		4. INCREASE N.P.S.H. AVAILABLE (SEE 3 ABOVE)	
5. AIR ENTERING SUPPLY LINE		5. CHECK PIPE JOINTS/GLAND ADJUSTMENT	
6. INSUFFICIENT HEAD ABOVE SUPPLY VESSEL OUTLET		6. RAISE VESSEL/INCREASE PIPE SIZE	
7. FOOTVALVE/STRAINER OBSTRUCTED OR BLOCKED		7. CLEAN OUT SUCTION LINE/VALVES	
8. PRODUCT VISCOSITY ABOVE RATED FIGURE		8. DECREASE PUMP SPEED/INCREASE TEMP.	
9. PRODUCT TEMP. ABOVE RATED FIGURE		9. COOL THE PRODUCT	
10. PRODUCT VISCOSITY BELOW RATED FIGURE		10. INCREASE PUMP SPEED/REDUCE TEMP.	
11. DELIVERY PRESSURE ABOVE RATED FIGURE		11. CHECK FOR BLOCKAGES IN DELIVERY LINE	
12. GLAND OVERTIGHT		12. ADJUST GLAND SEE O&M INSTRUCTIONS	
13. GLAND UNDERTIGHT		13. ADJUST GLAND SEE O&M INSTRUCTIONS	
14. GLAND FLUSHING INADEQUATE		14. CHECK FLUID FLOWS FREELY INTO GLAND	
15. PUMP SPEED ABOVE RATED FIGURE		15. DECREASE PUMP SPEED	
16. PUMP SPEED BELOW RATED FIGURE		16. INCREASE PUMP SPEED	
17. BELT DRIVE SLIPPING		17. RE-TENSION BELTS	
18. COUPLING MISALIGNED		18. CHECK AND ADJUST ALIGNMENT	
19. INSECURE PUMP/DRIVE MOUNTING		19. CHECK AND TIGHTEN ALL PUMP MOUNTINGS	
20. SHAFT BEARING WEAR/FAILURE		20. REPLACE BEARINGS	
21. WORN PUMP ELEMENT		21. FIT NEW PARTS	
22. RELIEF VALVE CHATTER		22. CHECK CONDITION OF VALVE/RENEW	
23. R.V. INCORRECTLY SET		23. RE-ADJUST SPRING COMPRESSION	
24. LOW VOLTAGE		24. CHECK VOLTAGE/WIRING SIZES	
25. PRODUCT ENTERING PACKING AREA		25. CHECK PACKING CONDITION AND TYPE	
26. DRIVE TRAIN BREAKAGE		26. CHECK AND REPLACE BROKEN COMPONENTS	
27. NEGATIVE OR VERY LOW DELIVERY HEAD		27. CLOSE DELIVERY VALVE SLIGHTLY	
28. DISCHARGE BLOCKED/VALVE CLOSED		28. REVERSE PUMP/RELIEVE PRESSURE/CLEAR BLOCKAGES	
29. STATOR TURNING		29. REPLACE WORN PARTS/TIGHTEN UP STATOR BOLTS	
30. STUFFING BOX "EATS" PACKING		30. CHECK FOR WORN SHAFT AND REPLACE	
31. VEE BELTS		31. CHECK AND ADJUST TENSION OR REPLACE	

Drawing Reference Numbers

<u>DRG.</u>	<u>DESCRIPTION</u>	<u>DRG.</u>	<u>DESCRIPTION</u>
<u>REF</u>		<u>REF</u>	
01A	BODY	P101	BEARING
06A	NAMEPLATE (SOG)	P102	BEARING
06B	NAMEPLATE (DOG)	P103	LIP SEAL
10A	LIPSEALS	P105	HEX. HD. BOLT
11A	BEARING COVER	P106	HEX. NUT
15A	THROWER GUARD	P107	WASHER
20B	GASKET (SUCTION CHAMBER)	P108	SPRING WASHER
22A	STATOR	P109	THRD. CUT SCREW
23A	SUCTION CHAMBER	P110	WASHER
24A	END COVER	P111	SOC. HD CAP SCREW
25A	ROTOR/FLEXISHAFT ASSY	P112	SPRING WASHER
32A	SHAFT	P113	DRIVESCREW
35A	BEARING SPACER	P401	SQ PAR KEY
47A	HALF RING	P402	SEAL
47B	HALF RING	P404	SOC. CAP SCREW
62A	SUPPORT FOOT	P408	LOCKNUT
62B	SUPPORT FOOT	P409	LOCKWASHER
65A	GLAND SECTION	P416	SPRING WASHER
76A	ADAPTOR FLANGE – HALF RINGS	P502	TAPER PLUG
76B	ADAPTOR FLANGE – HALF RINGS	P503	HEX NUT
		P504	SPRING WASHER
		P505	WASHER
		P506	HEX NUT
		P507	SPRING WASHER
		P508	WASHER
		P527	HEX HD BOLT
		P528	SPRING WASHER
		P529	WASHER
		P530	HEX NUT
		P580	HEX HD BOLT
		P581	STUD
		P582	STUD

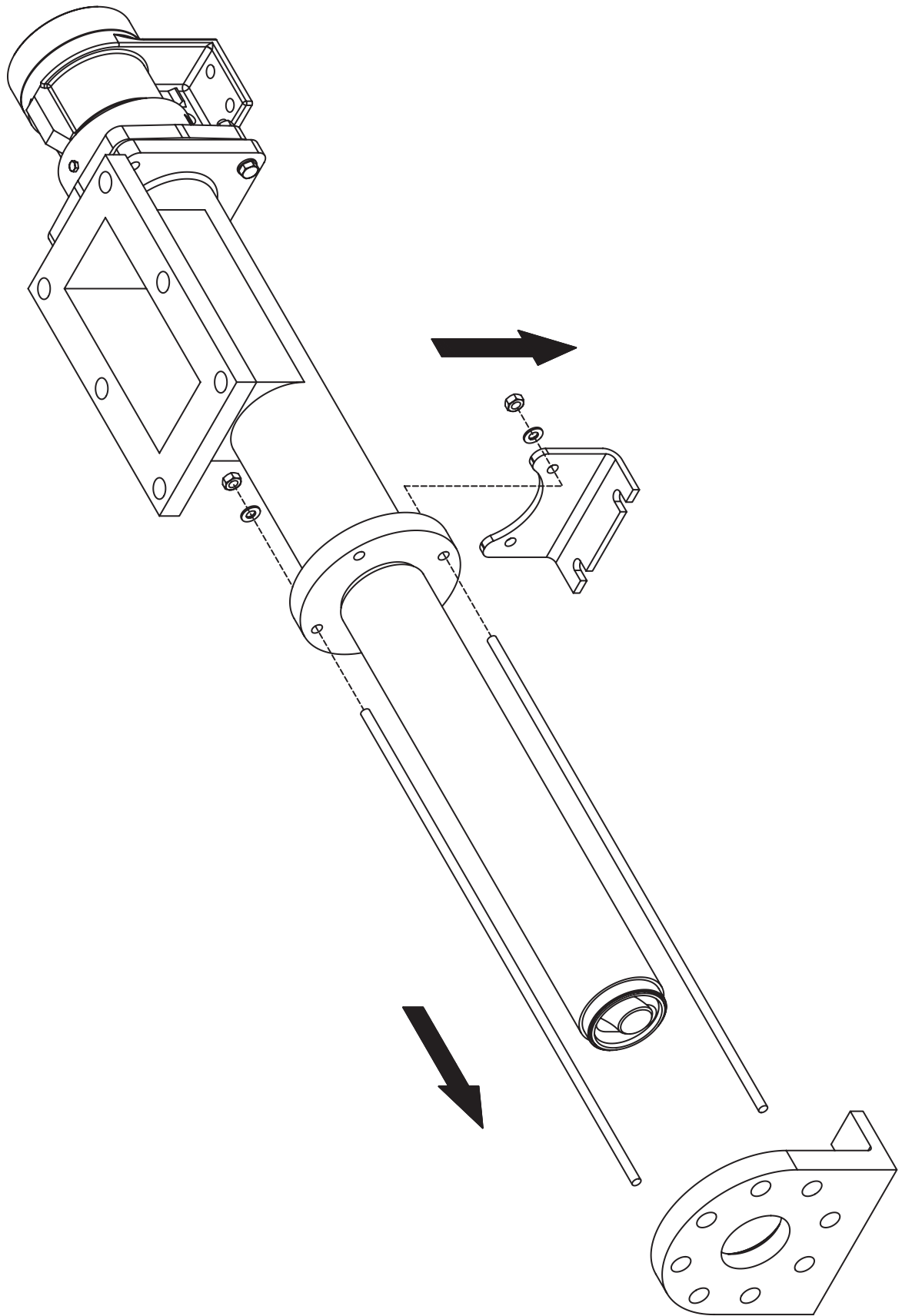
IMPORTANT NOTE

THE DRAWING REFERENCES SHOWN GIVE THE DESCRIPTION OF ALL THE PARTS DETAILED ON THE SECTIONAL DRAWINGS IN THIS SECTION OF THE BOOK. THEREFORE SOME OF THE REFERENCES MAY NOT BE SHOWN ON ANY ONE.

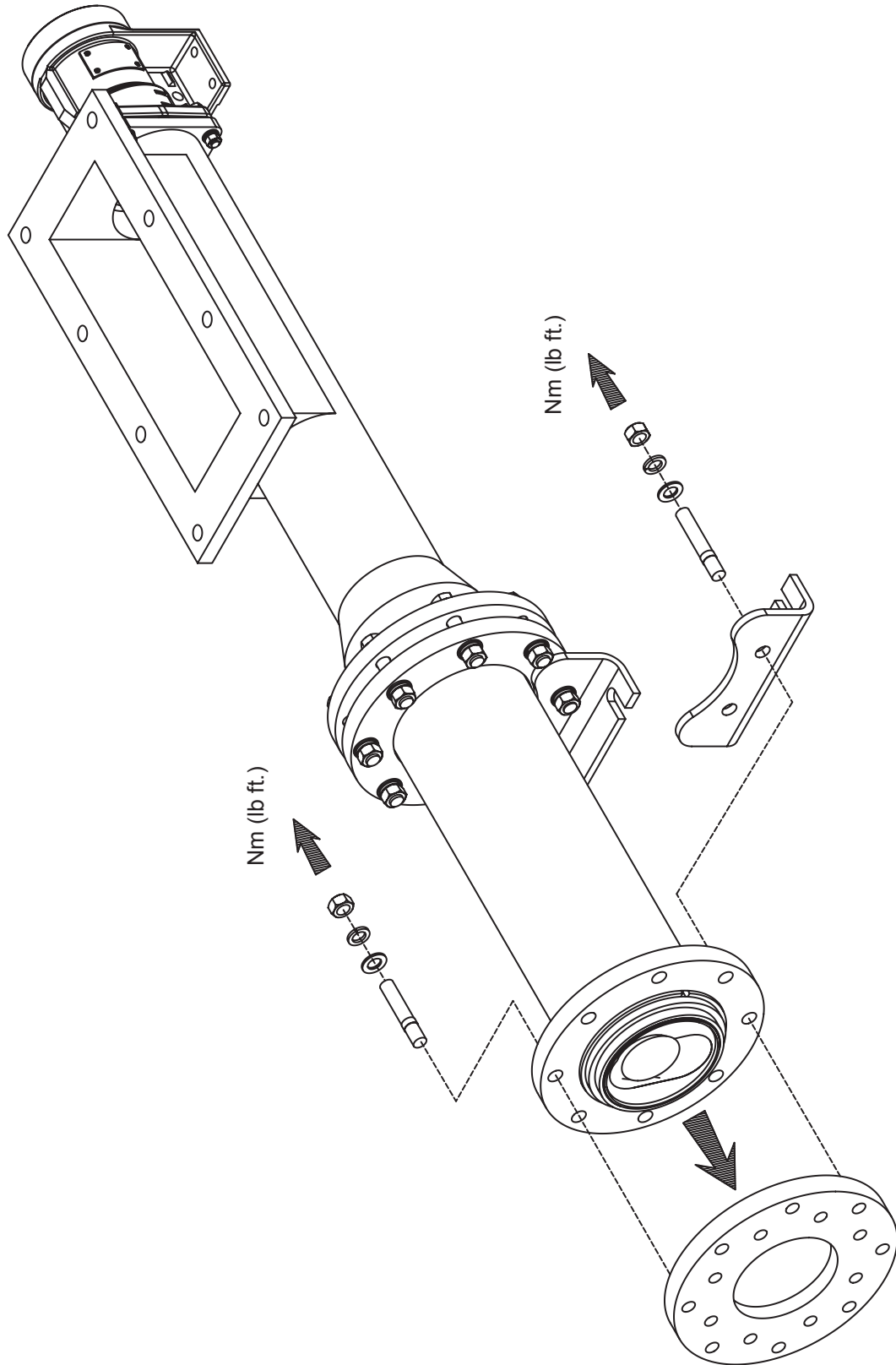
Dismantling & Assembly Diagrams

X043 ONLY

NOTE:
ASSEMBLY IS REVERSE OF THIS PROCEDURE TAKING INTO ACCOUNT FASTENER
TIGHTENING TORQUES, THREAD LOCKING AND FLANGE SEALING AS INDICATED

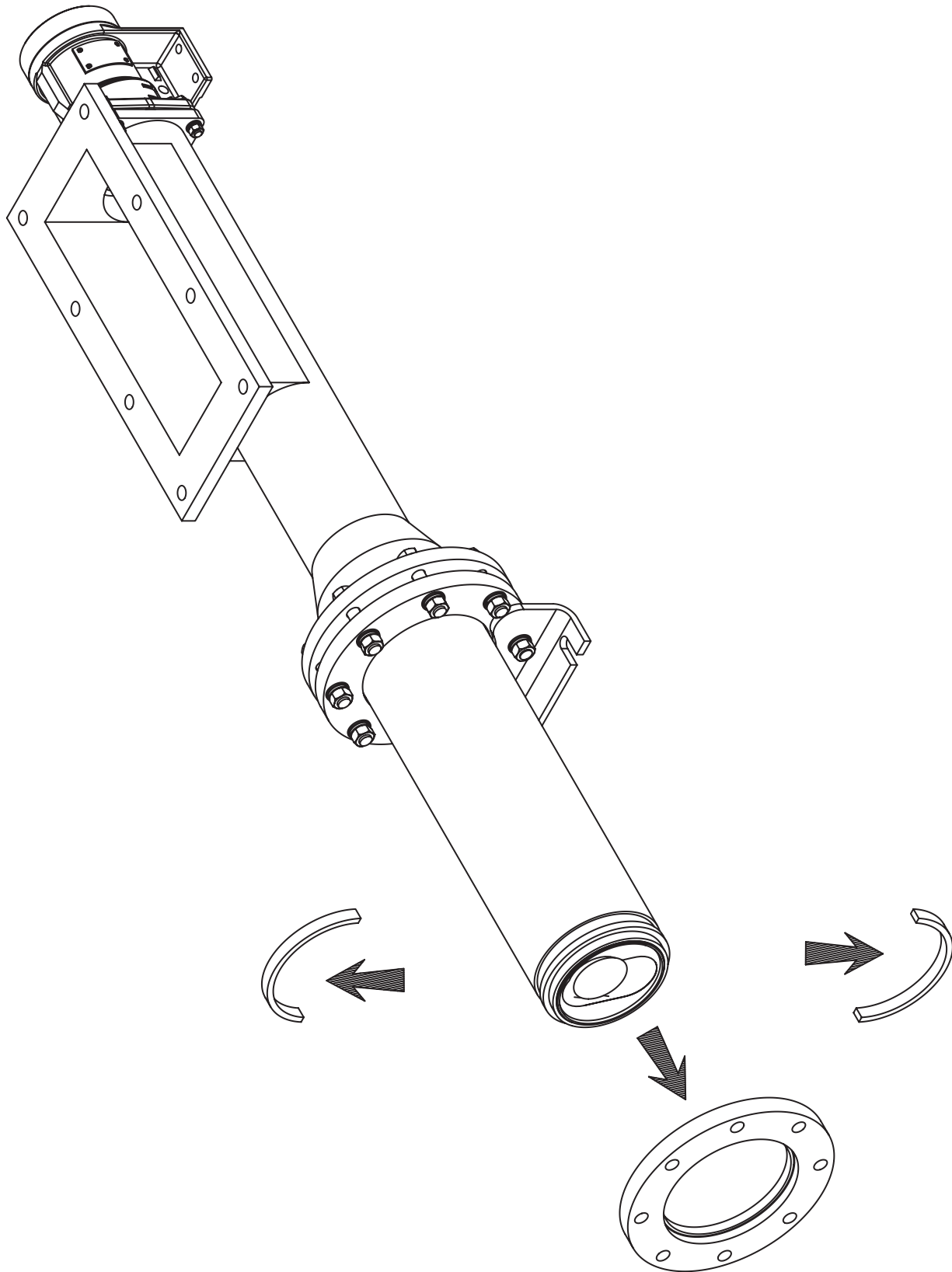


Dismantling & Assembly Diagrams



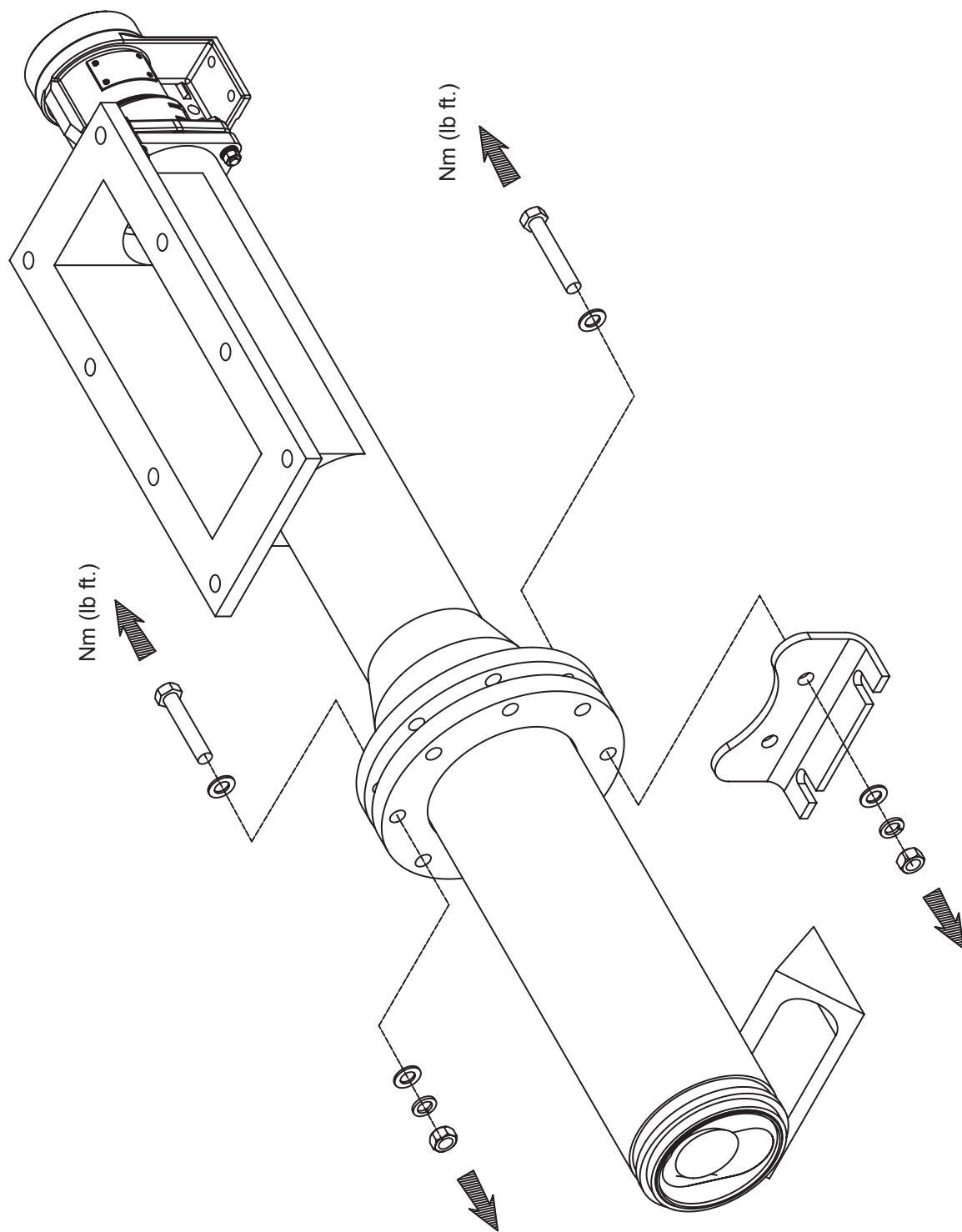
ALL EXCEPT X043

Dismantling & Assembly Diagrams



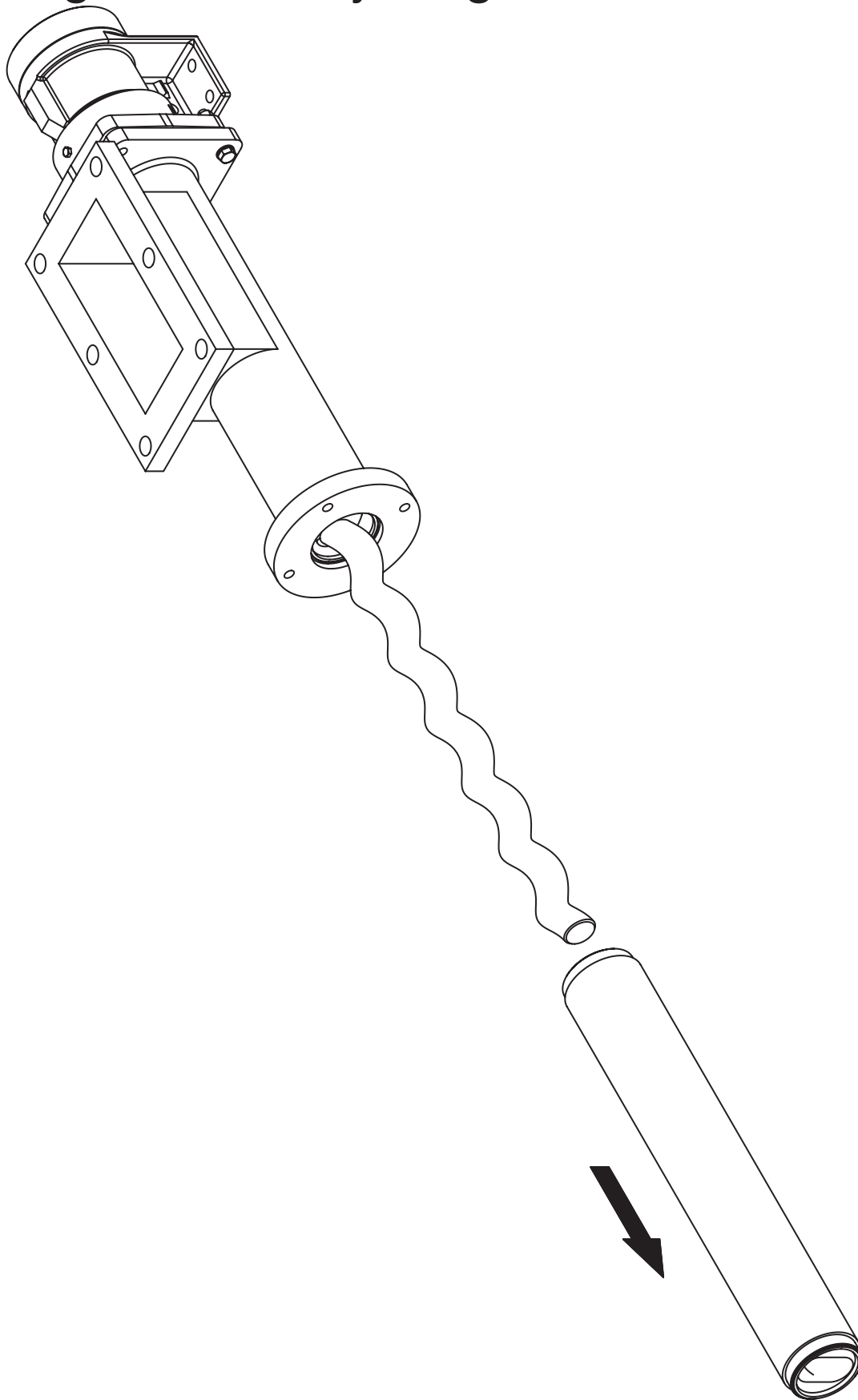
ALL EXCEPT X043

Dismantling & Assembly Diagrams



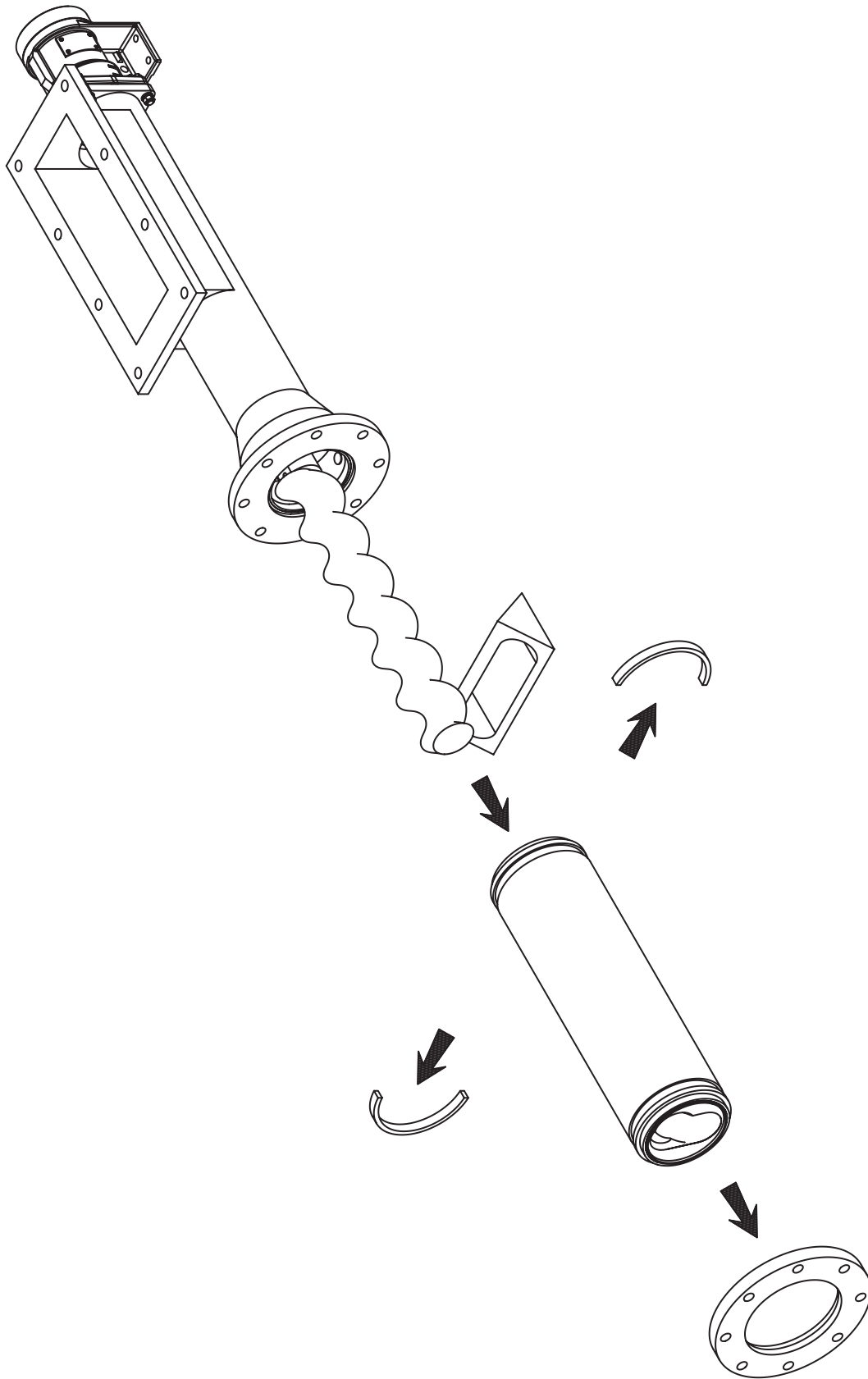
ALL MODELS

Dismantling & Assembly Diagrams



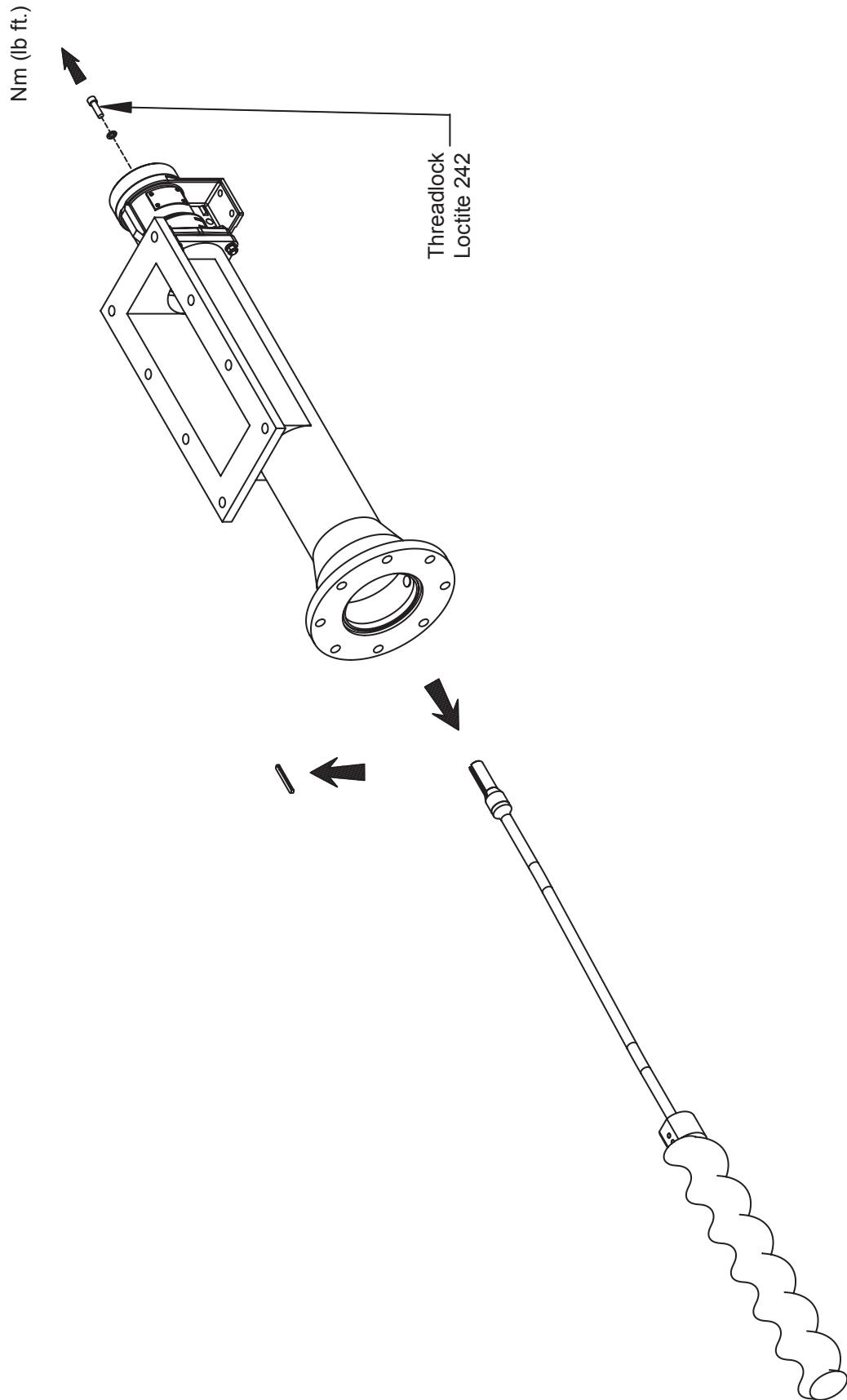
X043 ONLY

Dismantling & Assembly Diagrams



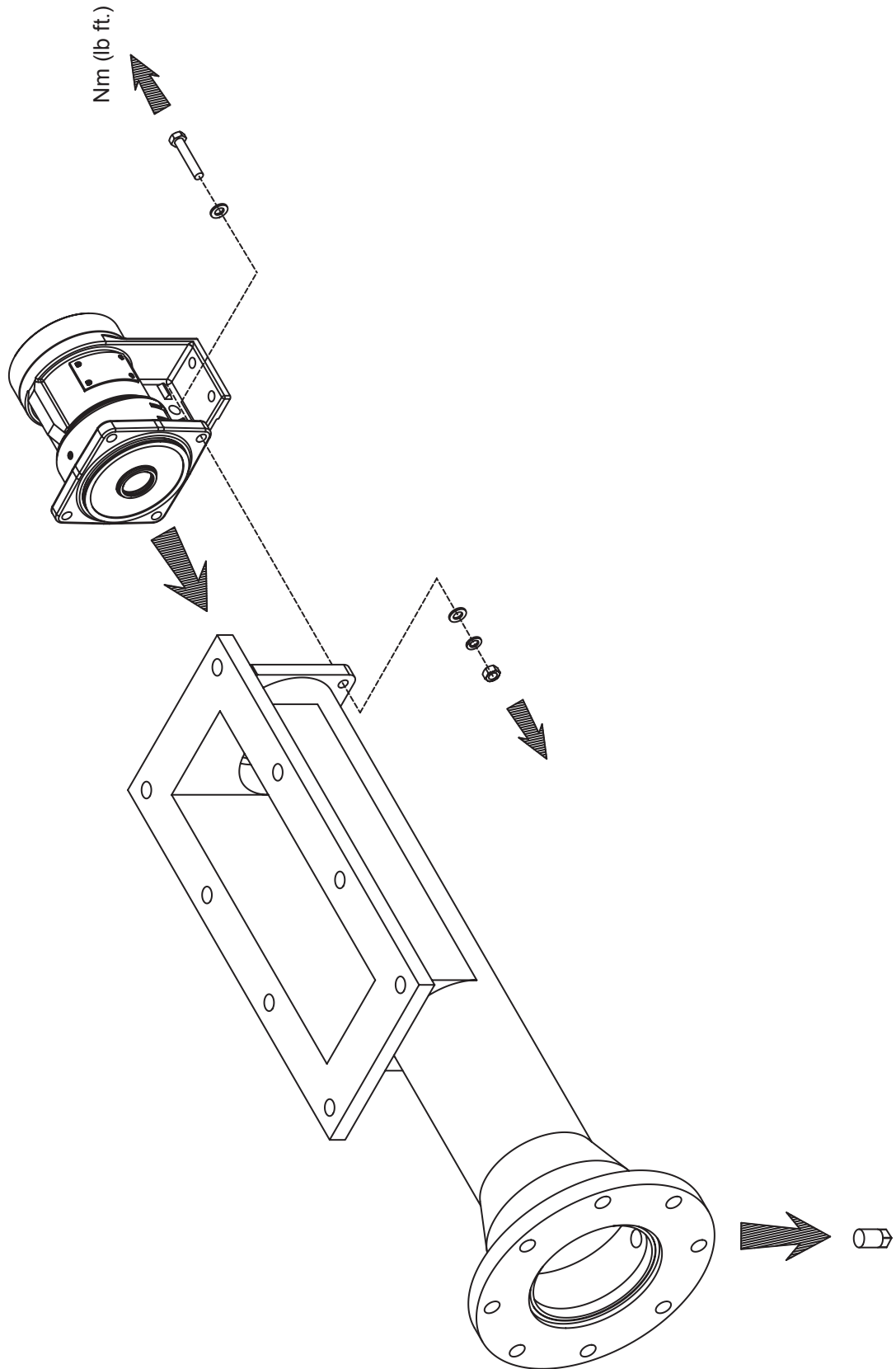
ALL EXCEPT X043

Dismantling & Assembly Diagrams



ALL MODELS

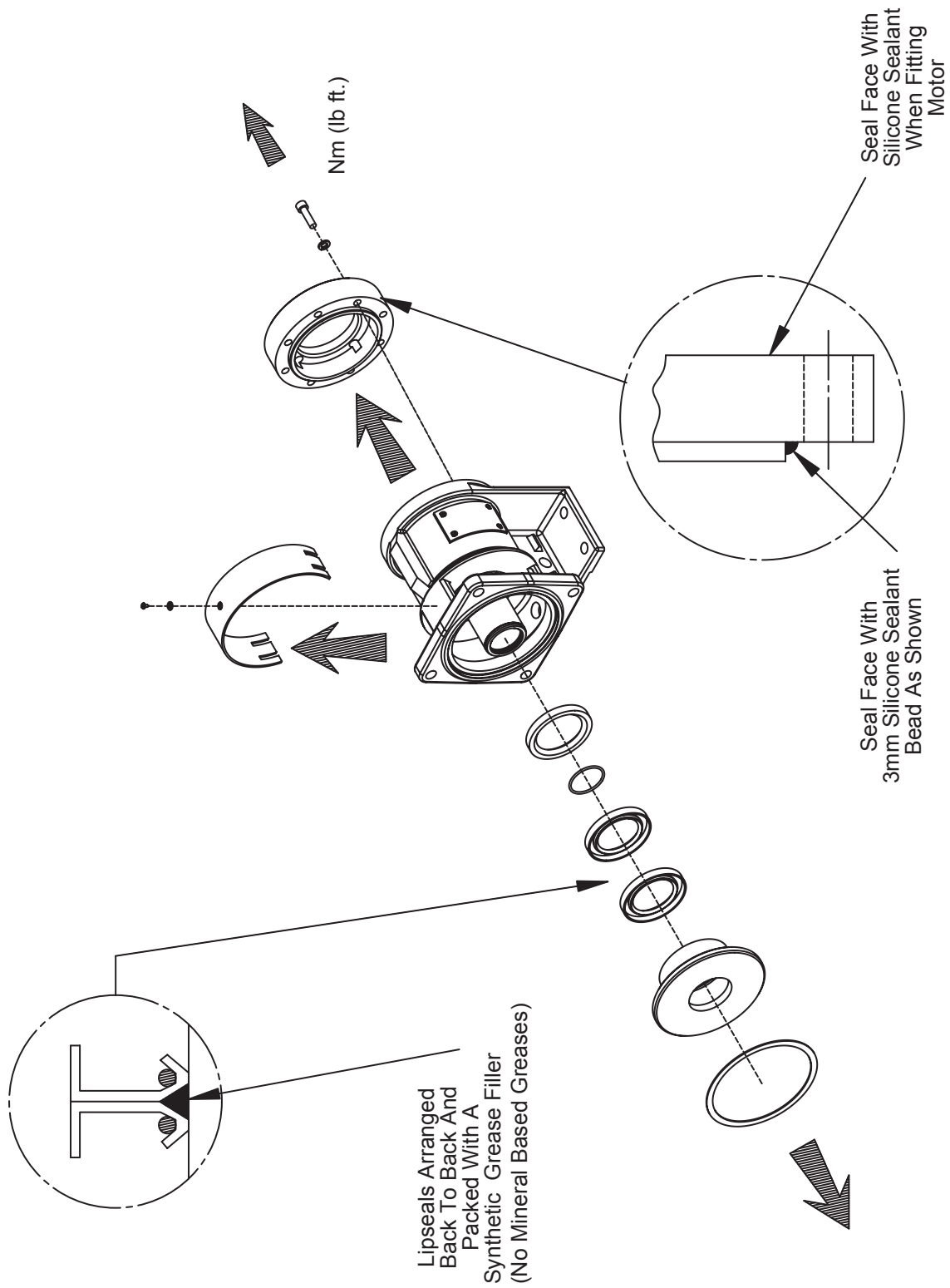
Dismantling & Assembly Diagrams



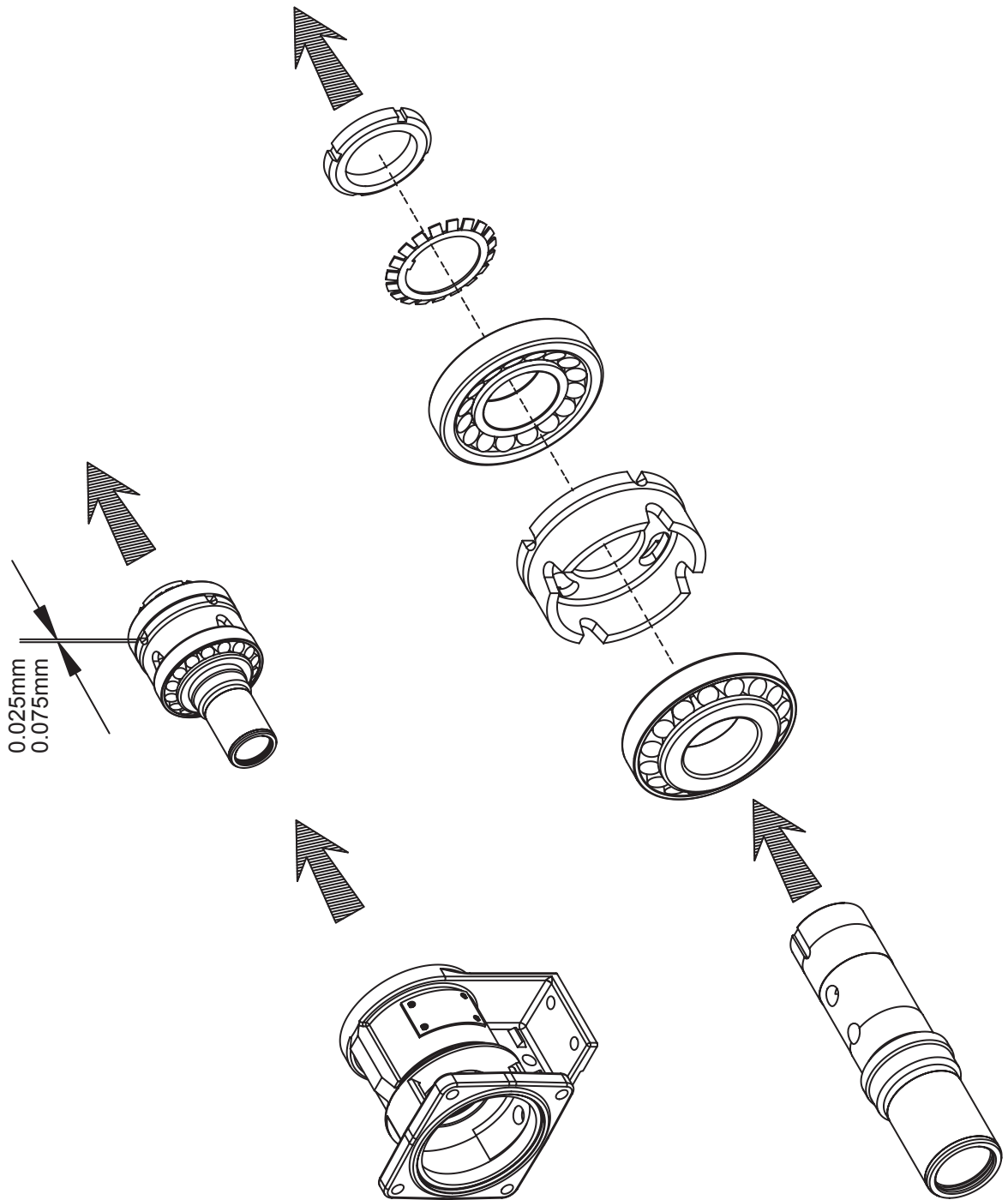
ALL MODELS

Dismantling & Assembly Diagrams

ALL MODELS

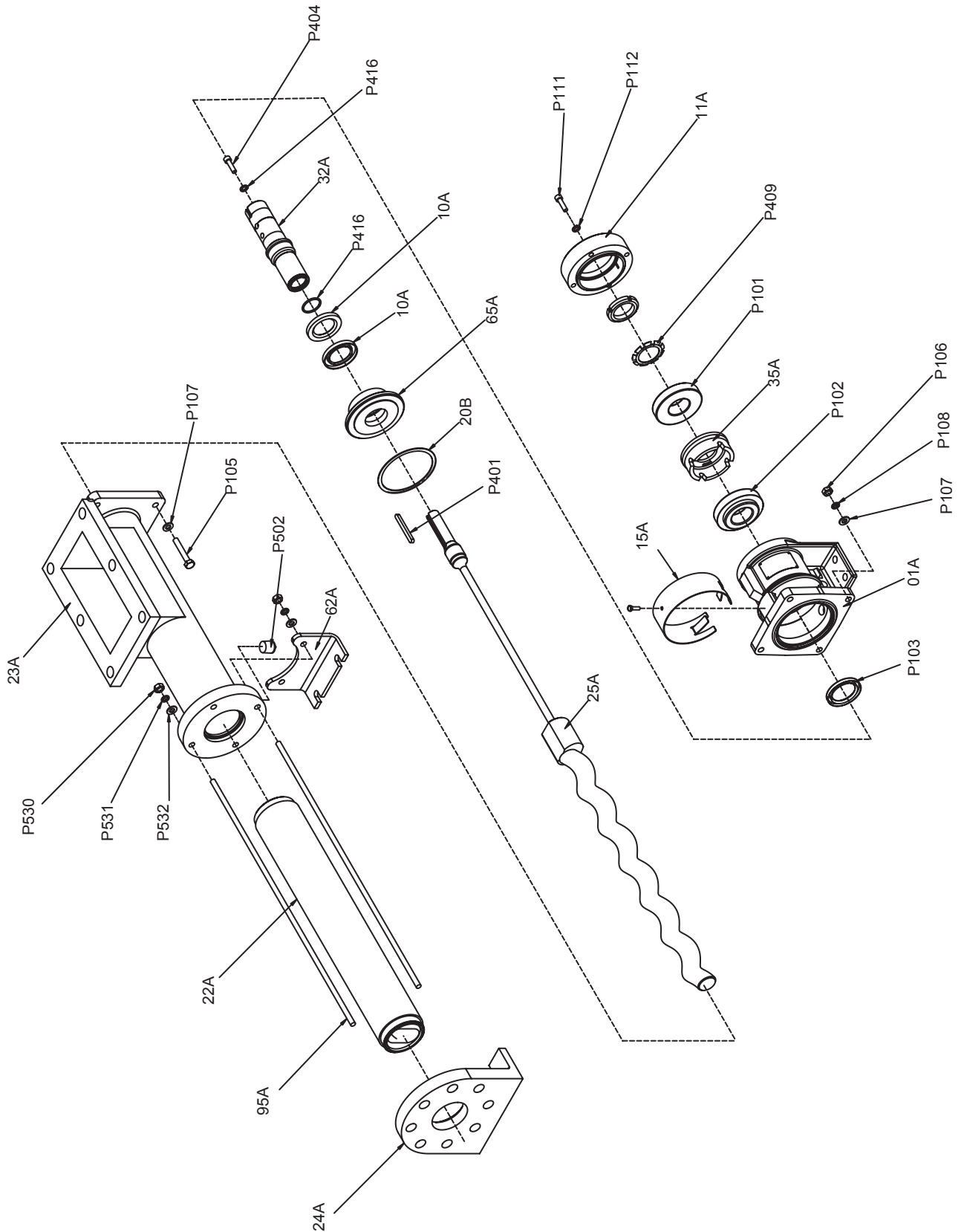


Dismantling & Assembly Diagrams



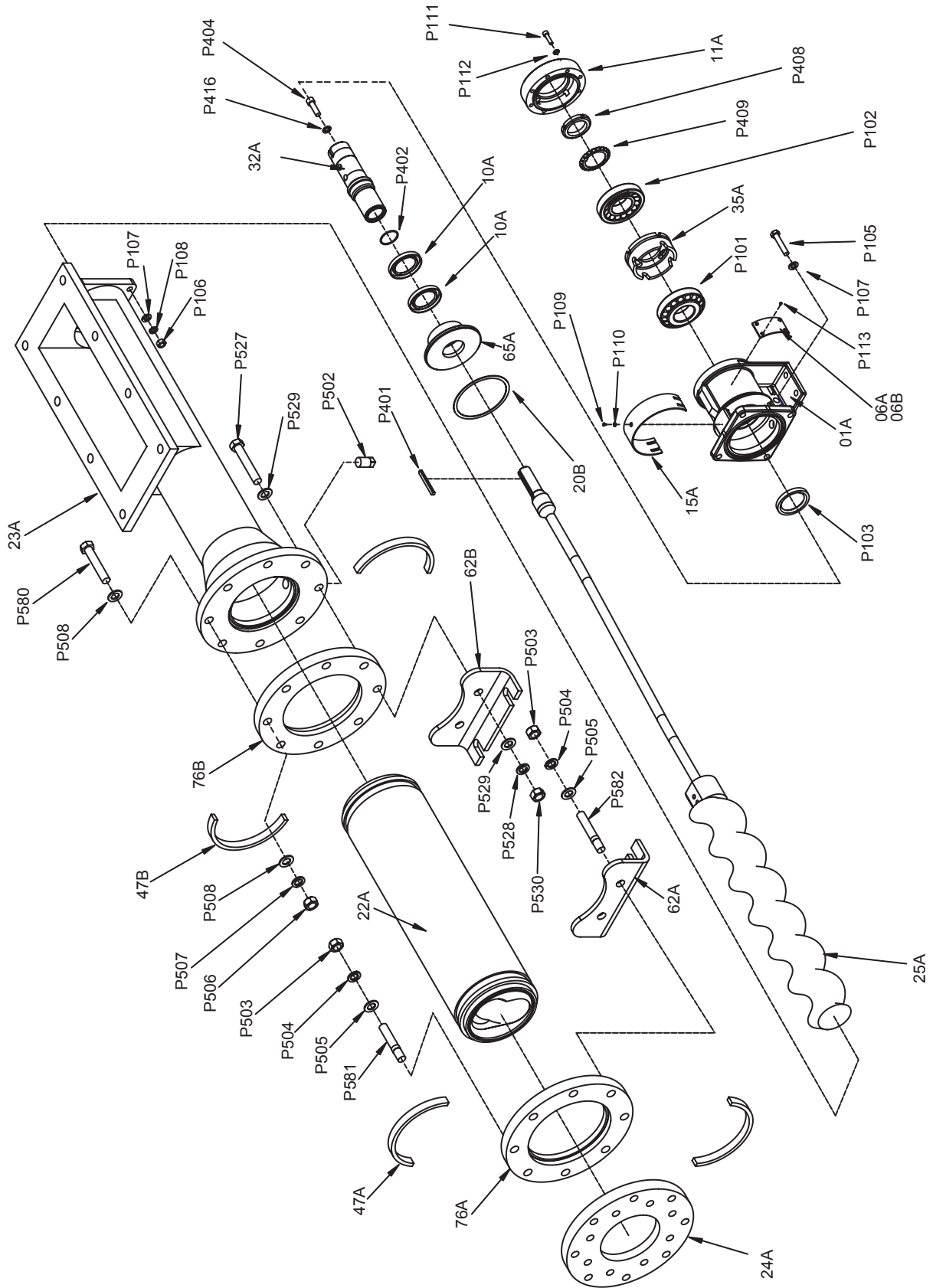
ALL MODELS

Exploded Views



X043 ONLY

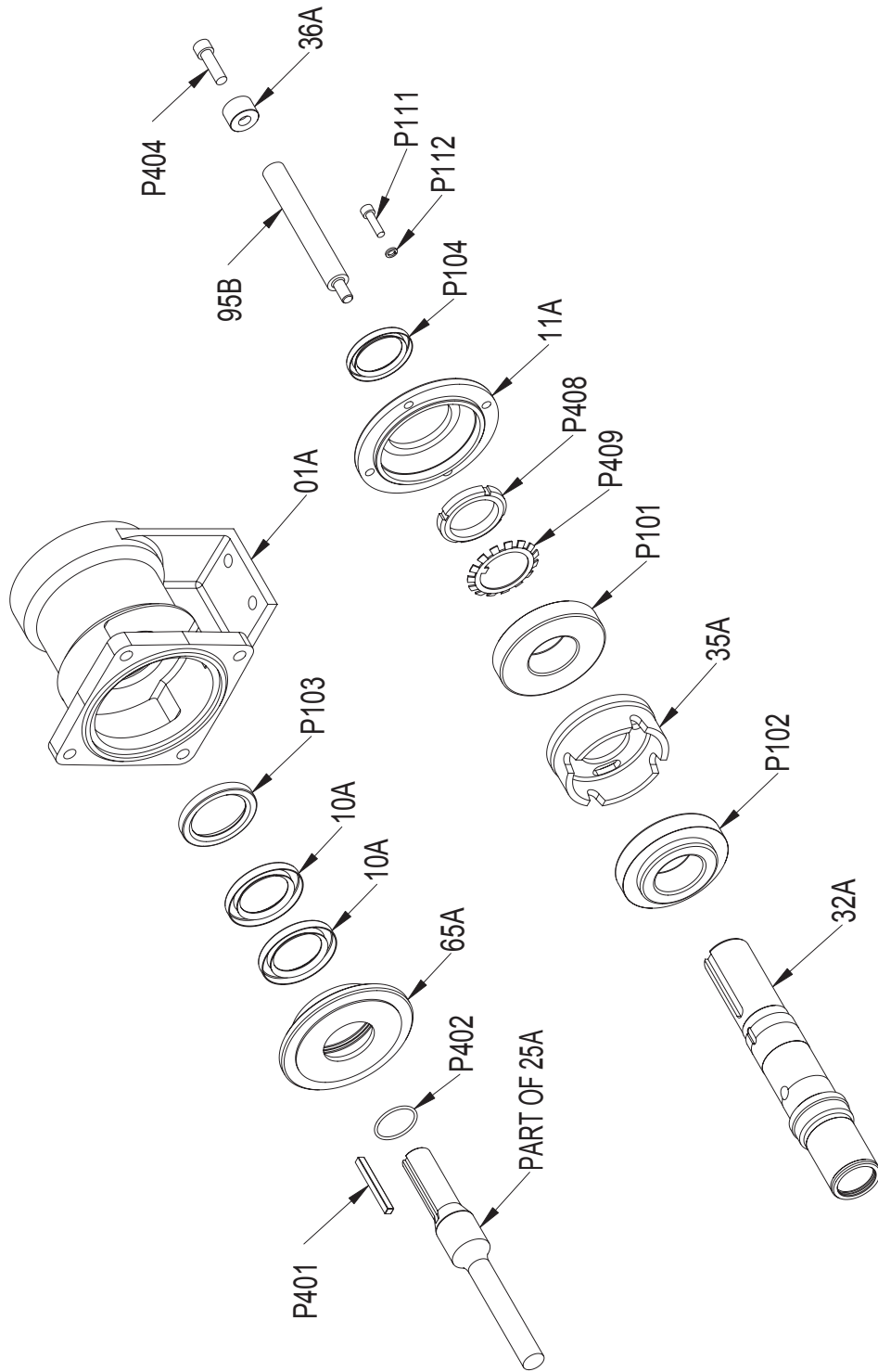
Exploded Views



ALL EXCEPT X043

Exploded Views

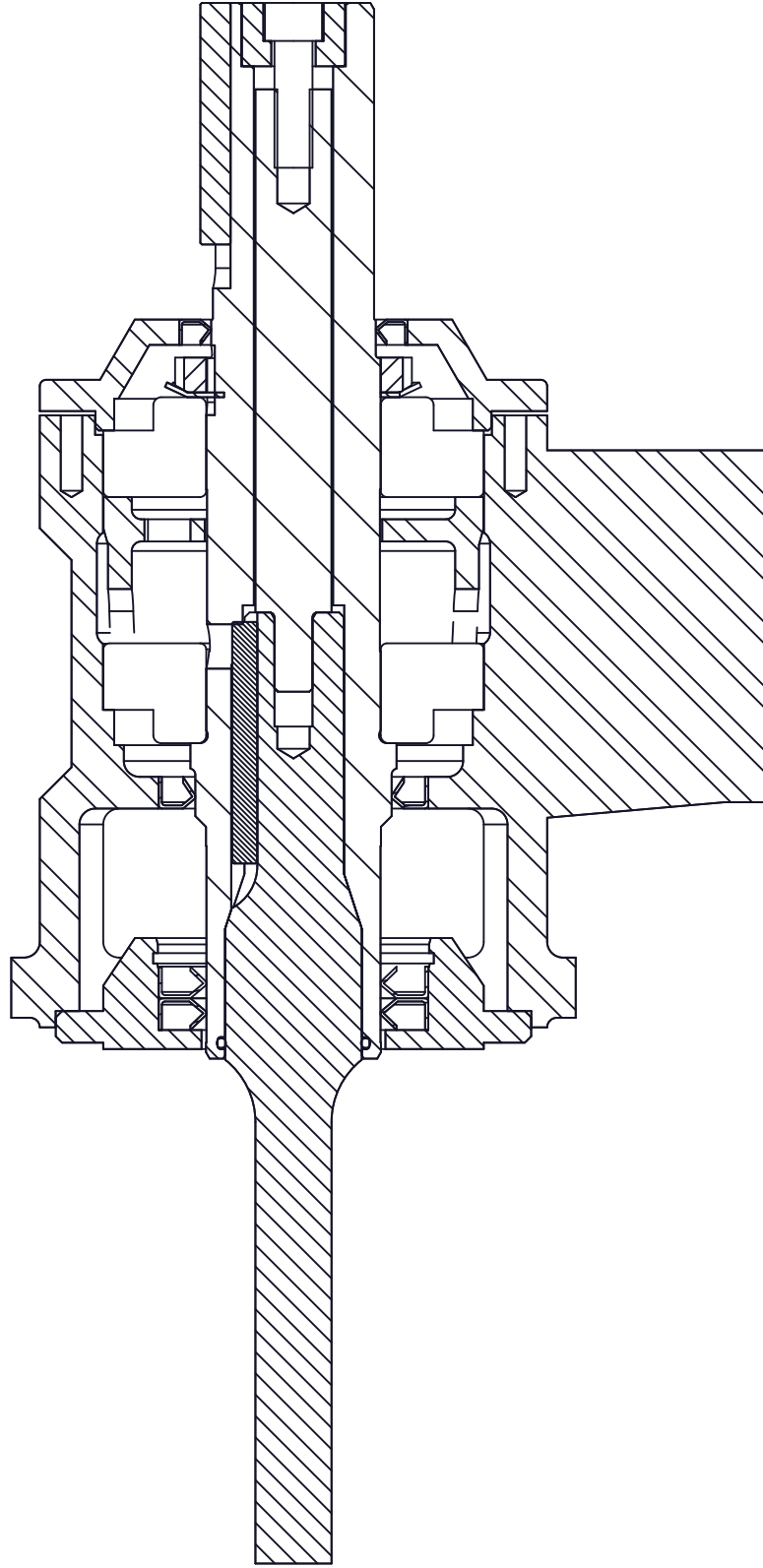
X073 LONG COUPLED - DRIVE END



Exploded Views

X073 LONG COUPLED - DRIVE END SECTIONAL

Please ensure correct orientation of all lipseals



Torque Tightening Figures

PUMP SIZE	SUCTION CHAMBER/BODY	BEARING COVER	FLEXISHAFT TIE BOLT	STATOR TIE RODS
	Nm (lb ft)	Nm (lb ft)	Nm (lb ft)	Nm (lb ft)
	P105	P111	P404	95A
X043	25 (18)	15 (11)	60 (44)	25 (18)

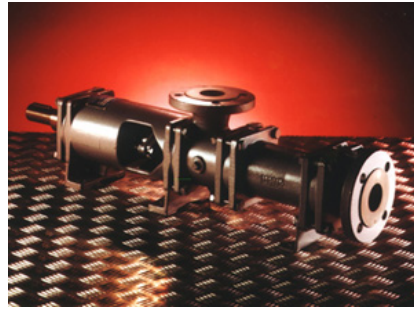
PUMP SIZE	END COVER		SUCTION CHAMBER / STATOR		SUCTION CHAMBER / BODY	BEARING COVER	FLEXISHAFT TIE BOLT
	Nm (lb ft.)		Nm (lb ft.)		Nm (lb ft.)	Nm (lb ft.)	Nm (lb ft.)
	P582	P581	P580	P527	P105	P111	P404
X054	60 (44)	60 (44)	60 (44)	60 (44)	40 (30)	15 (11)	95 (70)
X061	60 (44)	60 (44)	60 (44)	60 (44)	25 (18)	15 (11)	60 (44)
X062	60 (44)	60 (44)	60 (44)	60 (44)	40 (30)	15 (11)	95 (70)
X063	60 (44)	60 (44)	60 (44)	60 (44)	40 (30)	15 (11)	95 (70)
X071	60 (44)	60 (44)	60 (44)	60 (44)	40 (30)	15 (11)	95 (70)
X073	60 (44)	60 (44)	60 (44)	60 (44)	40 (30)	15 (11)	95 (70)
X091	60 (44)	60 (44)	60 (44)	60 (44)	40 (30)	15 (11)	95 (70)
X093	60 (44)	60 (44)	60 (44)	60 (44)	90 (68)	15 (11)	95 (70)

Mono Products

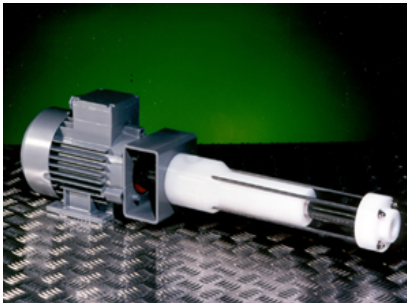
Progressing Cavity (P.C.) Pumps



E Range
Up to 420m³/h, 72 bar



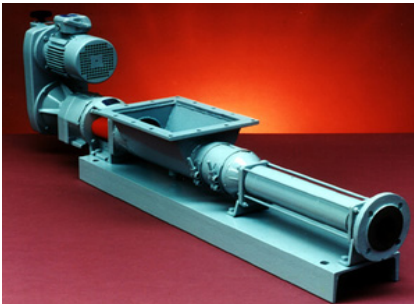
Merlin Ind. Range
Up to 60m³/h, 10 bar



LF Range
Up to 600/h, 12 bar



Monobloc B Range
Up to 225m³/h, 24 bar



W Range
Up to 215m³/h, 48 bar



S Range
Up to 60m³/h, 12 bar



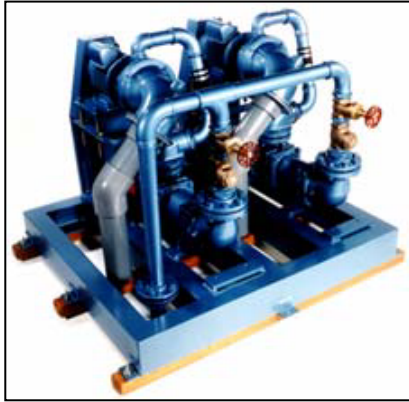
B/G/M Range
Up to 3m³/h, 5 bar



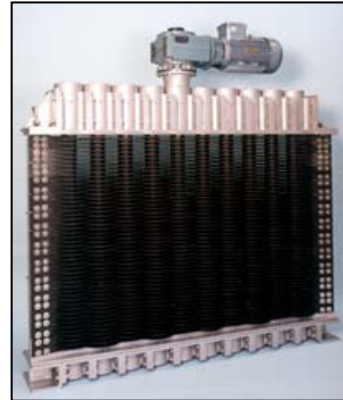
Solar Pumps
Up to 5.8m³/h, 12 bar

Mono Products

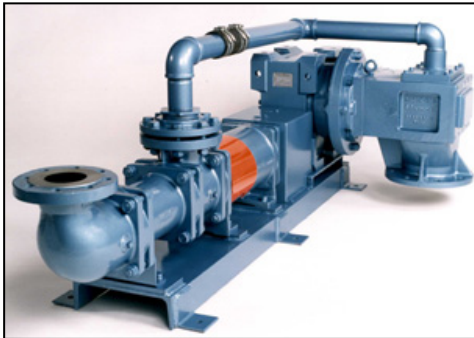
Grinder / Screens / Extractor Packages



Mutrator
Up to 15m³/h



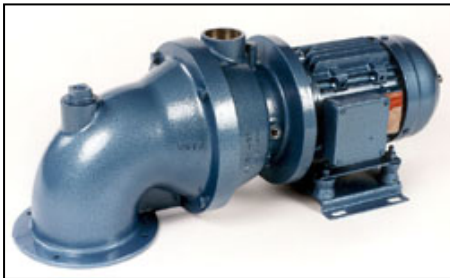
Discreen
Up to 13,400m³/h



Compact Munchpump
Up to 25m³/h



Screw Extraction Package
Up to 13,900m³/h



Macerator
Up to 15m³/h



Grifter
Up to 4m³/h



Muncher Family
Up to 650m³/h

UK and Europe

Mono Pumps Ltd, Martin Street, Audenshaw
Manchester, M34 5JA, England
T. +44 (0)161 339 9000
E. info@mono-pumps.com

Americas

Monoflo Inc., 9700 West Gulf Bank
Houston, Texas 77040, USA
T. +1 281 272 7700
E. inquire@monoflo.com

Monoflo SA

Ing. Huergo 2239 - B1842GGW
Monte Grande
Buenos Aires
Argentina
T. +54 4296 8997
F. +54 4284 0323
E. inquire@monoflo.com

Australasia

Mono Pumps (Australia) Pty Ltd
Mono House, 338-348 Lower Dandenong Road
Mordialloc, Victoria 3195, Australia
T. +61 (0)3 9580 5211
E. ozsales@mono-pumps.com

Mono Pumps (New Zealand) Ltd
PO Box 71-021, Fremlin Place, Avondale
Auckland 7, New Zealand
T. +64 (0)9 829 0333
E. info@mono-pumps.co.nz

Asia

Mono Pumps Ltd, No. 500 YaGang Road
Lujia Village, Malu, Jiading District
Shanghai 201801, P.R. China
T. +86 (0)21 5915 7168
E. monoshanghai@nov.com

www.monoflo.com



One Company, Unlimited Solutions